

Snowflake Dog Sweater

by Erin McNellis



Materials:

Suggested Yarn: Lion Brand Vanna's Choice, MC: 1 ball Color 180 (Cranberry), CC: 1 ball Color 100 (White). Sweater in size shown takes most of 1 ball of Cranberry (170 yards), and only a little White.

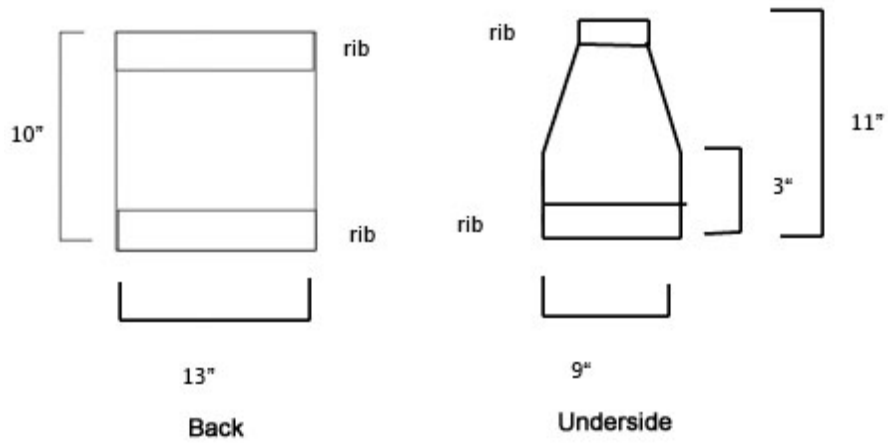
Sizing: Sweater fits a dog whose chest is 22" around at its widest point, and whose neck is 13" around. You can resize to fit your dog by substituting different yarn or needles (Vanna's Choice is a very heavy worsted, with a recommended gauge of 4 sts/inch, so using a regular worsted or a DK yarn could help you fit a smaller dog), or by adding or subtracting stitches on the sides. Sweater is 10" long, covering dog's front half only.

Gauge: 18 sts and 24 rows = 4 inches, using larger needles

Needles: US 6 and US 8, or size needed to obtain correct gauge

Snowflake Dog Sweater

Crappy, Not-to-Scale Schematic Diagram



Note: Underside is worked slightly longer than back to allow ease at the armholes. Top and bottom will be aligned in seaming.



Back

Using MC, CO 58 sts loosely on smaller needles.

Work in k2, p2 rib for 10 rows (1.5 inches).

Switch to larger needles, work 2 rows stockinette.

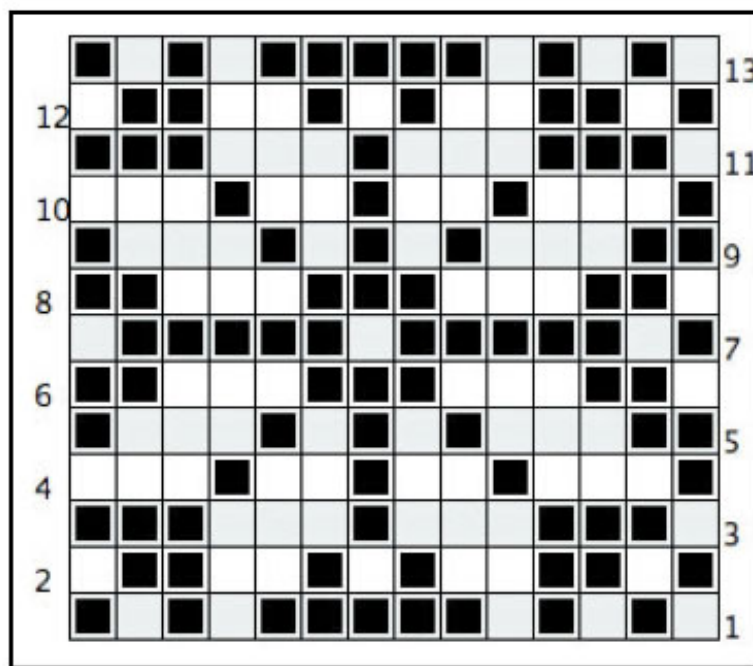
Work **Snowflake Chart 1**, a 14-stitch repeat worked 4 times, leaving 1 st on either side of piece as selvedge.

Continue working in stockinette in MC until piece measures 8.5 inches.

Switch to smaller needles, work in k2, p2 rib for 8 rows (1.25 inches).

BO loosely.

Snowflake Chart 1 (for Back)



selvedge stitch,
work once per row



repeat of 14 sts, work 4 times per row



selvedge stitch,
work once per row

Underside

Using MC, CO 46 sts loosely on smaller needles.

Work in k2, p2 rib for 10 rows (1.5 inches).

Switch to larger needles, work in stockinette until piece measures 3".

Row 1: k1, ssk, k to 3 sts from end, k2tog, k1.

Row 2: p to end.

Rep these 2 rows until 10 sts remain.

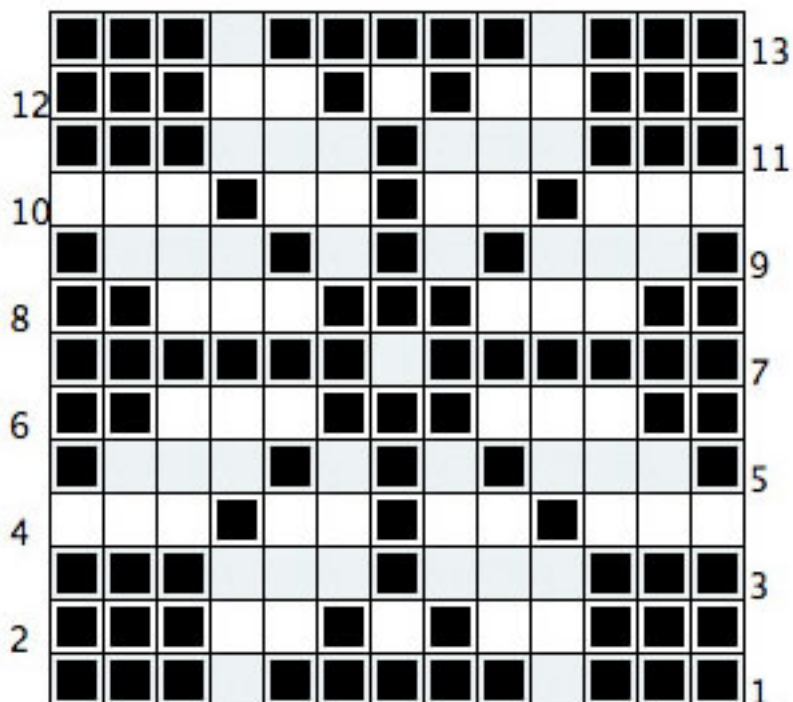
At the same time, begin to work **Snowflake Chart 2** on row 17. On this row: k1, ssk, k5, pm, work 1st row of Snowflake Chart 2, pm, k5, ktog, k1. Continue working decreases as established while you work chart and after you finish chart, until 10 sts remain as stated above.

Work 2 rows in stockinette. (This should be rows 32 and 33.)

Switch to smaller needles, work in k2, p2 rib for 8 rows (1.25 inches).

BO loosely.

Snowflake Chart 2 (for Underside)



Finishing

Sew back to underside leaving openings for front legs. Start sewing from top of neck, continue to 1" past ribbing. Then start sewing from bottom of sweater, continue to 1" past bottom snowflake motif. (Or use your judgment.) It's important to start the second seam from the bottom, because the underside is slightly longer than the top and you'll want your pieces to line up! Repeat for other side.

